



CONSUMABLE CATALOG

(QM-X4, 7Ex, Dimensions,
4Tx, 3Bx and previous models)

Your Partner In Consumables



Cutters and Tools



92-011-669

(NOP-40615)

Combination Safety
Bevel and Groove Tool
(Each)

1,000 cycles

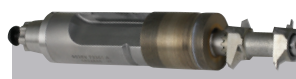


92-011-670

(NOP-40616)

Shelf Tool
20mm
(Each)

1,000 cycles



02-067-635

(NOP-40755)

Standard Bevel Cutter,
POL, SB, Groove
(Main tool) (Each)

Up to 15,000 cycles



05-075-270

(NOP-40769)

QM-X3 Groover Nut
(Each)

As needed



92-011-778

(NOP-93735)

End Mill, 3.32 Ø, 14mm
Flute, LH
(Each)

250 cycles



92-011-672

(NOP-93968)

Drill, 1mm Ø, LH,
With Flat
(Each)

500 cycles

**QM-X4
Edger**



Other Consumables



92-007-959

(NOP-90140)

Vacuum Bag Set
(25/Pkg)

300 cycles or 3/4 full



60-053-023

(NOP-88501)

6 Base Lens Blank
3mm x 70mm
(Each)



92-009-360

(NOP-88516)

8 Base Lens Blank
4mm x 80mm
(Each)



90-056-106

(NOP-88514)

CR-39 Lens
Flat
(Each)



05-075-020

(NOP-40706)

Probe Tip
Upper
(Each)

As needed



05-075-021

(NOP-40707)

Probe Tip
Lower
(Each)

As needed



02-006-916

(NOP-73161)

Leather/Rubber Pad
for Lens Clamp, 19mm
(Each)

As needed



05-058-177

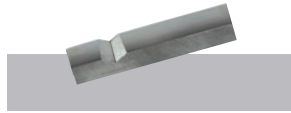
(NOP-90047)

Lens Clamp Assembly
(19mm, Short,
SL Insert, Plastic)
(Each)

As needed

Recommended maintenance schedule

Cutters and Tools



92-007-884

(NOP-93072)

Carbide Cutters
Bevel 5mm Shelf
(10/Pkg)

Up to 300 cycles



02-054-033

(NOP-90833)

Dual Polish
Cutter Body Assembly
High Luster
(Each)



92-008-052

(NOP-93074)

Coated Carbide Cutter
Standard Bevel
(Each)

About 1000 cuts



92-007-907

(NOP-29209)

Drill/Mill Bit, 1mm Ø
Left Hand, Long Life
(Each)

500 cycles



92-007-960

(NOP-93930)

Large Grooving Wheel
for Main Cutter Ø 0.81
(Each)

3,000 cycles



92-008-220

(NOP-29218)

Drill/Mill Bit, 1mm Ø
Right Hand, Standard
(Each)

500 cycles



92-007-879

(NOP-93936)

Grooving Wheel
Drill Mount
(Each)

3,000 cycles



05-057-841

(NOP-93148)

Polishing Cutter
Clamp
(Each)

Other Consumables



7Ex Edger



60-053-018

(NOP-3068)

Plastic Fan Grille
(Each)

As needed



92-007-957

(NOP-27092)

Probe Tip
(Each)

As needed



92-007-958

(NOP-29104)

Sponge Dual Hub
(10/Pkg)

300 cycles



35-051-505

(NOP-65232)

T-15 Torx Screw
Cutter Clamp (Each)



20-053-094

(NOP-65520)

Coupler Servo
1/4" x 1/4" (Each)



02-054-872

(NOP-90043)

Right Side Clamp
Vario, 19mm (Each)



92-007-953

(NOP-90083)

Right Side Clamp
Vario, 17mm (Each)



02-073-837

(NOP-73162)

Taper Plug, 19mm
(Each)



92-007-963

(NOP-90178)

Taper Plugs
17mm Half-Eye Clamp
(6/Pkg)



92-013-982

(NOP-75169)

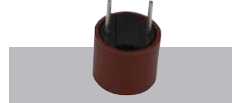
Tri-Cool Coolant
(Gallon)



20-053-362

(NOP-77339)

Fuse 2.5 amp
Water Reservoir
(Each)



90-051-469

(NOP-77341)

Fuse 1.25 amp
Drill Rotation
(Each)



92-014-297

(ST-109C)

Clear Pattern Blank
2.5" x 3"
(50/Pkg)



60-053-023

(NOP-88501)

6 Base Lens Blank
3mm x 70mm
(Each)



92-007-959

(NOP-90140)

Vacuum Bag Set
(25/Pkg)

300 cycles or 3/4 full



60-053-020

(NOP-73184)

Door O-Ring
1/2ID x 3/32W
(Each)

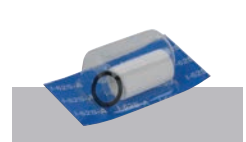


02-054-154

(NOP-90694)

Filter Assembly
Coolant Bottle
(Each)

Quarterly



90-050-982

(NOP-75158)

Filter Element
(Each)

Recommended maintenance schedule

Recommended Finishing Products for NOP Edgers

Edging Pads

HydroEdge™ Edging Pads for Super Hydrophobic Lenses

- Unique molecular foam and high-strength adhesion provide superior results on super hydrophobic lenses
- Adhesive and foam superb torque resistant properties are designed to prevent axis failures
- Double tabbed. Blue tab designates lens side adhesive



92-013-530
(DV-SH71)
24 mm Round,
Solid Center
(1,000/Roll)

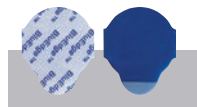


92-013-515
(DV-SH73)
18 mm Half-Eye,
Round Corners,
Solid Center
(1,000/Roll)

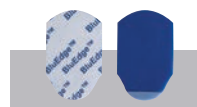


BluEdge™ Edging Pads for Standard and AR Coated Lenses

- Unique thin foam, yet stronger for a better bond between lens and block, thereby reducing axis failures
- Foam and adhesive combination provides exceptional conformability with most lens types
- Ideal for use with edging masks for slippery A/R coatings



92-013-120
(DV-171)
24 mm Round,
Solid Center
(2,000/Roll)



92-013-105
(DV-173)
18 mm Half-Eye,
Round Corners,
Solid Center
(2,000/Roll)



Edging Blocks

Black Flexible Edging Blocks. Use with edging pads with solid centers.



92-015-186
(DV2001-1400) (25/Pkg)
24 mm Round



92-015-187
(DV2001-1401) (25/Pkg)
18 x 24 mm Half-Eye

Solid Center Edging Blocks. Use with edging pads with solid centers.



92-014-052
(PT-1003-A)
Round 1.25 Base
Yellow (50/Pkg)



92-014-053
(PT-1003-AH)
Half-Eye 1.25 Base
Yellow (50/Pkg)



92-014-055
(PT-1003-B)
Round 3.5 Base
Black (50/Pkg)



92-014-056
(PT-1003-BH)
Half-Eye 3.5 Base
Black (50/Pkg)



92-014-058
(PT-1003-C)
Round 6.0 Base
Purple (50/Pkg)



92-014-059
(PT-1003-CH)
Half-Eye 6.0 Base
Purple (50/Pkg)

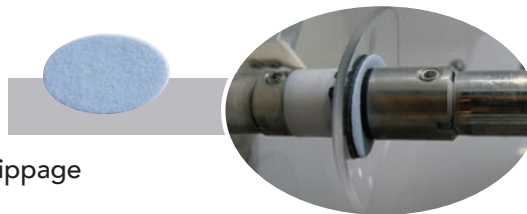
Edging Protectors and Masks

92-013-769

(LP0400)

Premium Blue Back-Side-Lens Protector
19 mm x 30 mm
(1,000/Roll)

Reduces flexing which causes AR crazing and slippage



92-013-028

(DVEM-2538)

Anti Slip Discs
25 mm x 38 mm
(500/Roll)



Deblocking Pliers

92-013-777

(DV-WO2006V)

Premium Deblocking Pliers
(Each)





DIMENSION

Tracer

Consumable Parts



05-055-770

(NOP-52876)
Clear Vinyl Tubing for
Frame Holder.
Pre-cut
(Each)



20-053-133

(NOP-51753)
Stylus Indicator Tip
(Each)



20-053-135

(NOP-77324)
Fuse 2.5 amp
Fast Acting
(Each)

Consumable Parts



20-053-133

(NOP-51753)
Stylus Indicator Tip
(Each)



05-055-738

(NOP-74244)
Clear Vinyl Tubing for
Frame Holder Pins
(1 foot)

4Tx

Tracer



20-058-993

(NOP-77739)
Fuse +5 V
(T 3.15 A)
(Each)



20-053-114

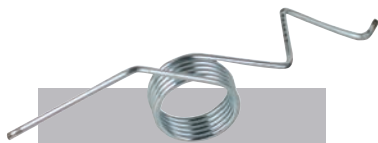
(NOP-77356)
Fuse -12 V
(T 0.5 A)
(Each)



20-058-992

(NOP-77731)
Fuse +12 V
(T 2.0 A)
(Each)

Consumable Parts



02-071-706

(NOP-33286)
Torsion Spring
(Each)



20-053-130

(NOP-33260)
Lamp Bulb
(Each)



05-055-781

(NOP-33334)
Bumper Support
for Stage
(Each)

**3Bx
Blocker**



Sales



262.250.2333
cs.na@dacvision.com

Tech Support



800.800.1550, 972.677.2700
finishing_services@dacvision.com

Training



nop.academy@dacvision.com